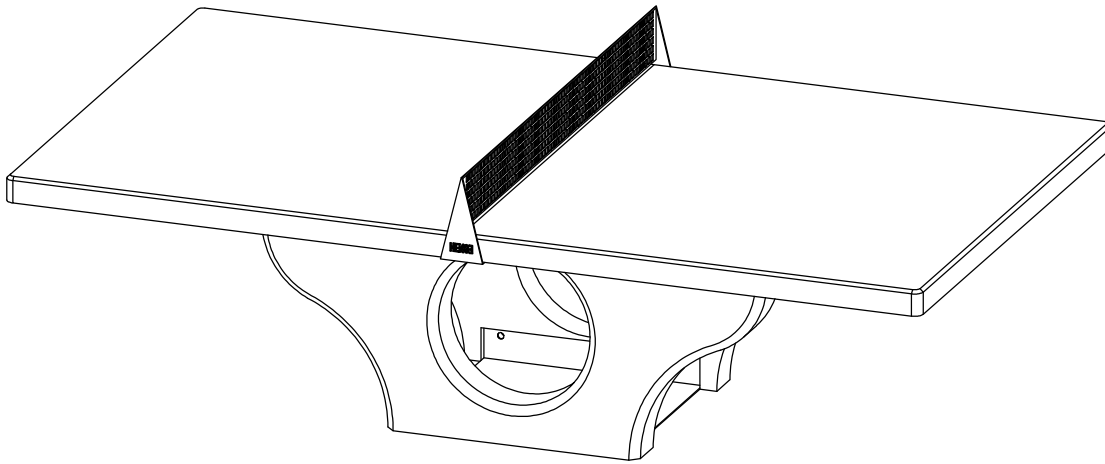




Table Tennis Platform Model T20



The award-winning **HENGE Model T20** is weather resistant platform for the game of table tennis. Constructed from precast reinforced concrete and powder coated steel, and polymer sealed against penetration by salt and graffiti spray paint, the T20 provides dimensions and ball bounce as per International Table Tennis Federation regulations. Requiring next to no maintenance, the table is built to last for decades, all the while complementing nearby landscape and architecture with its aesthetic curves and rich textures. The easily removable metal net allows for a second use as picnic table. Options include finish, aggregate mixes and styles of net.

TABLE FINISH

- Silk
- Exposed Aggregate

NET FINISH

- Powder Coated Mild Steel in Jet Black
- Stainless Steel

NET

- City Grid
- Prism

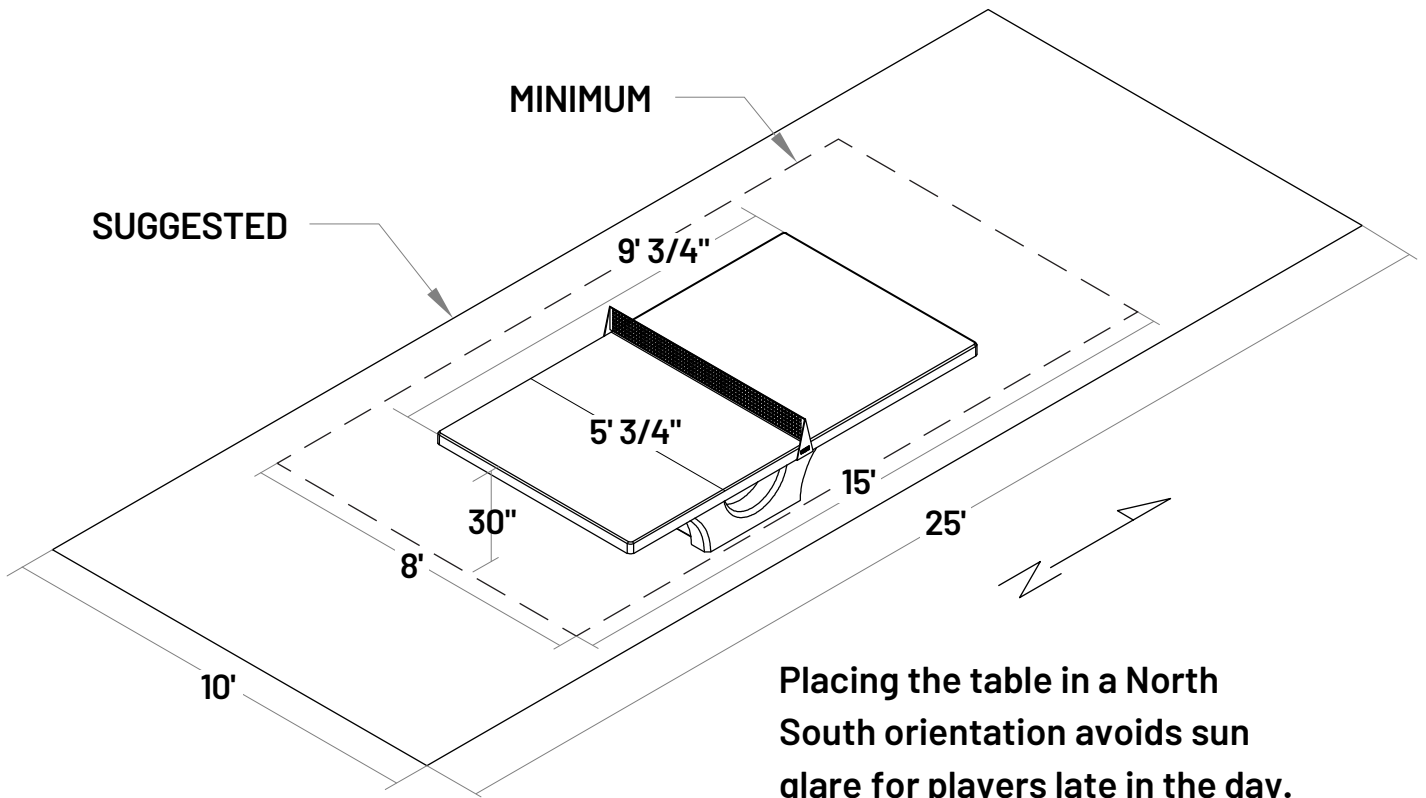
EXTRAS

- Plaque
- Logo in Net

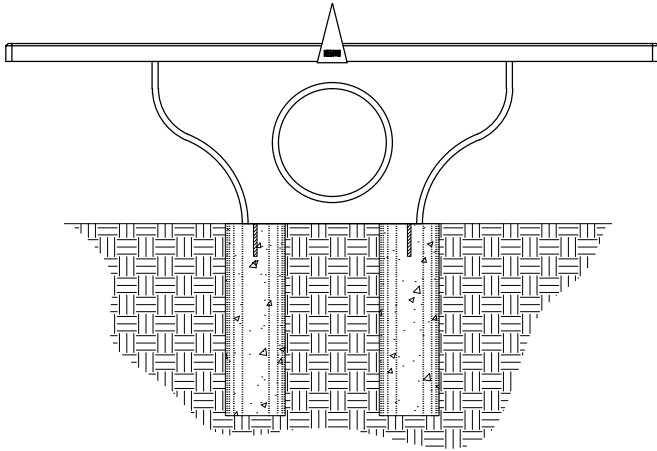
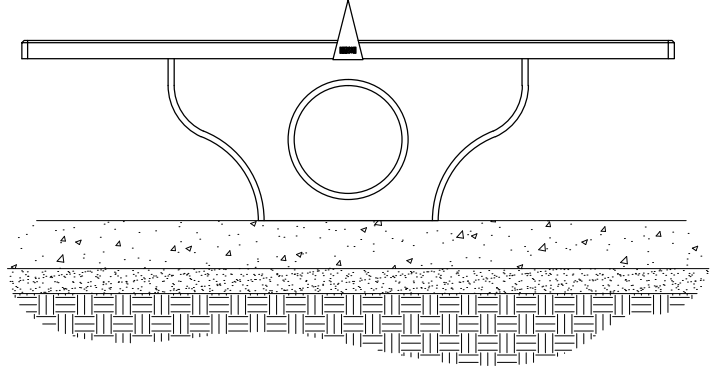
Project: _____ Date: _____

Submitted By: _____ Date: _____

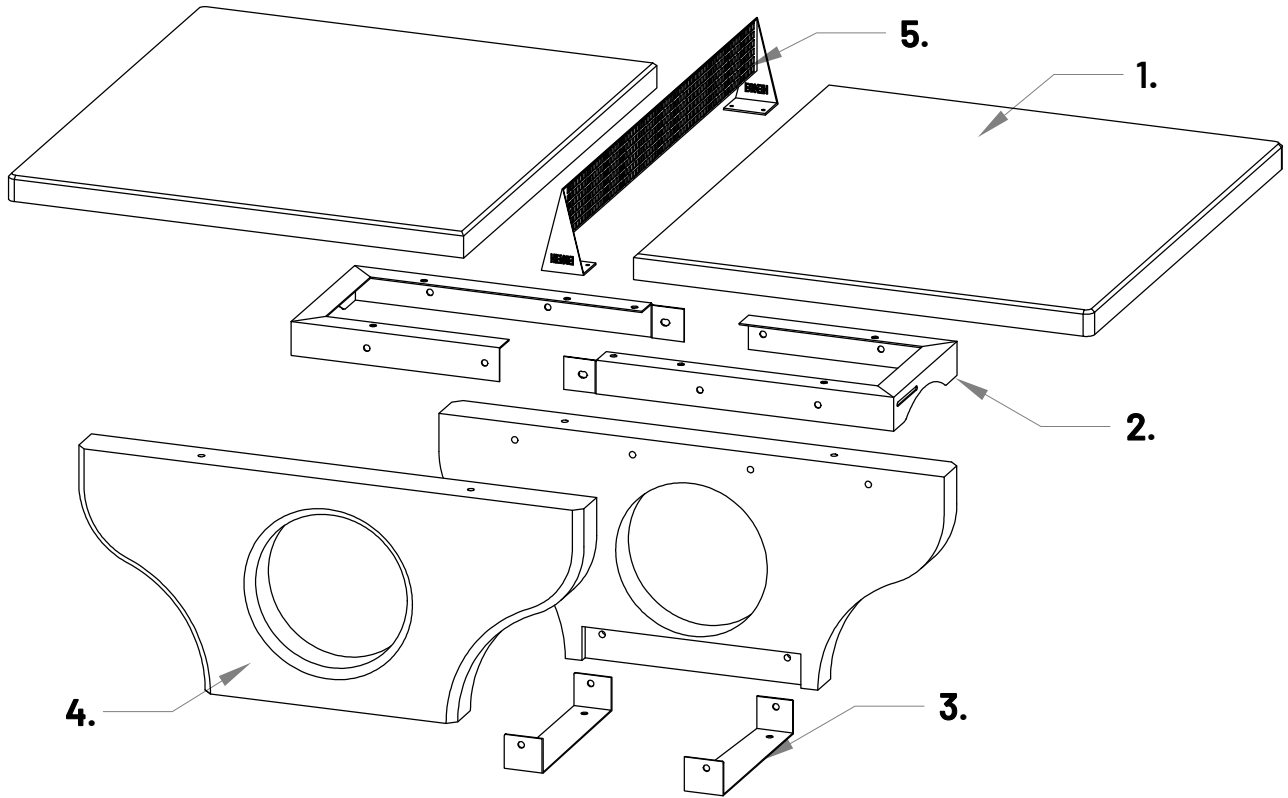
Approved By: _____ Date: _____



Basic foundation: 60" x 60" x 6" reinforced concrete foundation on 8" packed gravel or sand.



For zones subject to freezing, HENGE recommends concrete reinforced footer placement using 12" sonotubes or similar.



1. CONCRETE COMPONENTS

- Reinforcement: #4 (1/2" rebar and mesh)
- 5000 PSI at 28 days
- Aggregate/Sand:
 - 1/2" to 3/8" stone with gray sand
 - 1/8" black stone with white sand
- Sealer: silicone rubber, graffiti-resistant
- Weight of base: 800 lbs
- Weight of each half top: 900 lbs
- Total net weight 2600 lbs
- Shipping weight 2700 lbs
- 108" L x 60"W x 30" H (w/net 36" H)

2. TOP BRACKET

- Material:
 - Mild Steel, 7 Gauge
 - Powder Coat, same as Net above
 - Optional: Stainless Steel (for Ocean Climate)

3. BASE BRACKET

- Material and Finish same as Top Bracket above

4. FINISH

- Exposed Aggregate Finish (Terrazzo)
- Light Acid Wash

5. NET

- Material:
 - Stainless Steel
 - Mild Steel, 7 Gauge
- Finish:
 - TGIC-Polyester Powder Coat
 - Coat thickness: 2-3 mil
 - Color: Jet Black
 - Sheen: 80-90 Gloss at 60 degrees

6. INTERNAL FASTENERS

- Hex Head Bolts, Stainless Steel
- Security, Button Head Bolts, Stainless Steel
- Caulk-in Concrete Anchors, Zinc Alloy